

# 15TON TRUCK MOUNTED CRANE



# ZTON1505/1506

Korea's leading special vehicle manufacturer

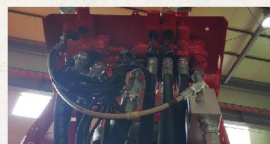
## Options



Overwinding Alarm



Oil Cooler



Overloading Prevention System



Overwinding Prevention System



# ZTON1505/1506

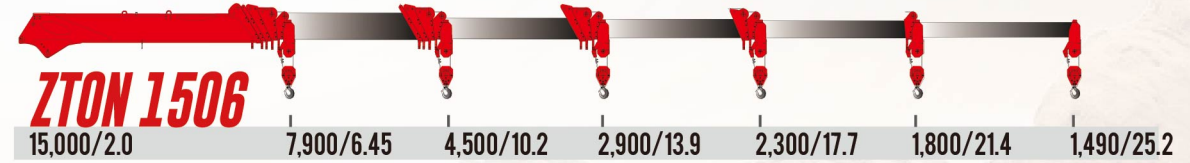


## Specification

DESCRIPTION	UNITS	ZTON1505	ZTON 1506	
Lifting Capacity	ton-meter	42.0	51.0	
Lifting Capacity / Outreach	kg/m	15,000 / 2.5	15,000 / 2.0	
		7,550 / 5.4	7,900 / 6.45	
		3,900 / 9.1	4,500 / 10.2	
		2,620 / 12.7	2,900 / 13.9	
		1,930 / 16.4	2,300 / 17.7	
		1,490 / 20.0	1,800 / 21.4	
Working Radius	m	20.0	25.2	
Max. Working Height	m	23.0	27.8	
Rated Oil Flow(1000RPM)	cc/rev	90 x 90	90 x 90	
Working Pressure	kg/cm <sup>2</sup>	210 / 210(Winch)	220 / 220(Winch)	
Shape Of Boom		Hexagonal box construction, 5 section boom with 2extension cylinder	Hexagonal box construction, 5 section boom with 2extension cylinder	
Boom Length	m	Min. 5.72 ~ Max. 20.32	Min. 5.73 ~ Max. 20.93	
Boom Extending Speed	m/sec	14.6 / 38	18.7 / 50	
Boom Raising Speed	°/sec	0 ~ 80 / 20	-10 ~ 80 / 30	
Slewing Angle	°	360° continuous	360° continuous	
Slewing Speed	r.p.m	1.5	2.2	
Wire Rope	Ø x m	Hercules 19x7 Ø14 x 100m	Hercules 19x7 Ø14 x 100m	
Hook Speed	m/min	15 (4th layer / 4 fall lines)	15 (4th layer / 4 fall lines)	
Winch Type		Hyd. motor driven, spur gear speed reduction with hydraulic brake	2 speed winch, hydraulic motor driven, planetary gear reduction with hydraulic brake	
Slewing Gear Type		Hyd. motor driven, combined type of planetary gear and worm gear speed reduction with hydraulic brake	Hyd. motor driven, combined type of planetary gear and worm gear speed reduction with hydraulic brake	
Outrigger system	Front	Type	H-type, two stage horizontally & Vertically Hydraulic operated	H-type, two stage horizontally & Vertically Hydraulic operated
		Span	m	Max. 6.3
	Rear	Type	H-type, single stage horizontally & Vertically Hydraulic operated	H-type, single stage horizontally & Vertically Hydraulic operated
		Span	m	Max. 4.7
Truck chassis, recommended	ton	15.0 above	15.0 above	
Standard Safety Devices		1. Pressure relief valve for hydraulic circuit 2. Counter balance valves for raise and telescope cylinder 3. Pilot check valves for vertical outrigger cylinder 4. Hydraulic brake for slewing reduction gear	5. Mechanical brake for winch reduction gear 6. Pressure gauge / Boom angle indicator 7. Hook safety latch / Alarm buzzer 8. Over-winding device	
Option		1. Over-winding prevention system    2. Overload prevention system    3. Oil Cooler		

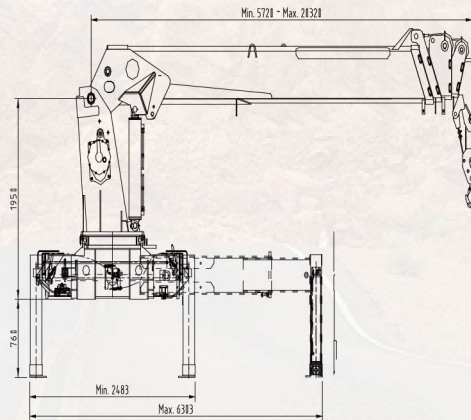
\*Above specification may be changed without notice due to improvement.

Lifting capacity/Working height (kgf/m)

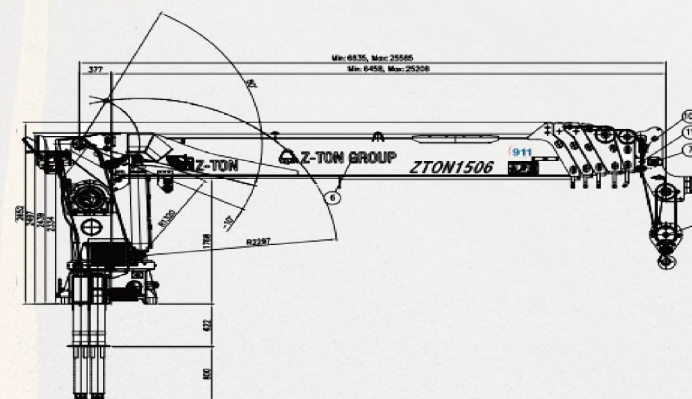


## Layout

### ZTON 1505



### ZTON 1506



## WORKING RADIUS

WORKING RADIUS (M)	BOOM LENGTH			
	5.72M	9.37M	13.02M	16.67
2	114000	12240		
3	11250	9060		
4	9510	7340	6690	5000
5	8320	6260	5610	5000
6	6,47550	5520	4880	4550
7	4860	4350	4020	3810
8	4530	3940	3610	3400
9	4030	3620	3300	3000
10	3,13900	3350	3040	2830
11		3120	2820	2620
12		2910	2640	2440
13		2,172620	2490	2290
14			2350	2160
15			2220	2040
16			2060	1940
17			1,1641930	1840
18				1750
19				1670
20				1490
21				

CAUTION  
 1. Rated loads shown in the chart are derived under the condition that all outriggers are fully extended on solid and well levelled ground and the vehicle is well levelled on the ground.  
 2. Rated loads shown in the chart are based on the crane strength rather than stability.  
 3. Rated loads shown must be reduced in accordance with vehicle weight and loaded condition of truck, crane mounting position, wind, ground condition and operating speed.  
 4. Rated loads are to be considered based on 8-fall wire rope.  
 5. The weights of hook(135 kg), slings, and any accessories attached to the boom or loading must be deducted from the above rated loads in the chart.

