

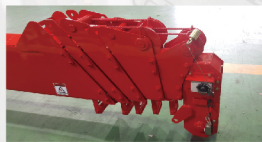
8TON TRUCK MOUNTED CRANE



ZTON 876LT/876M

Korea's leading special vehicle manufacturer

Options



Overwinding Alarm



Oil Cooler



Overloading Prevention System



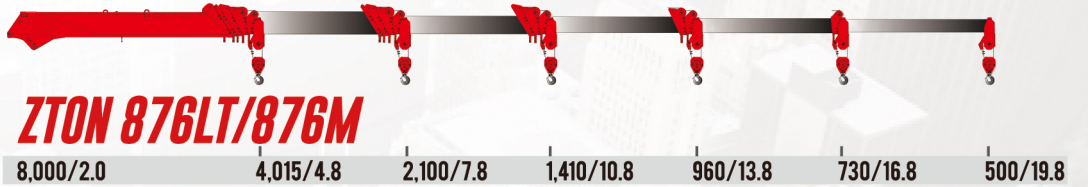
Overwinding Prevention System



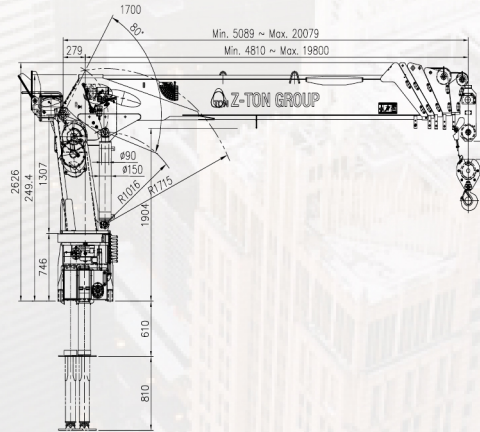
ZTON 876LT/876M



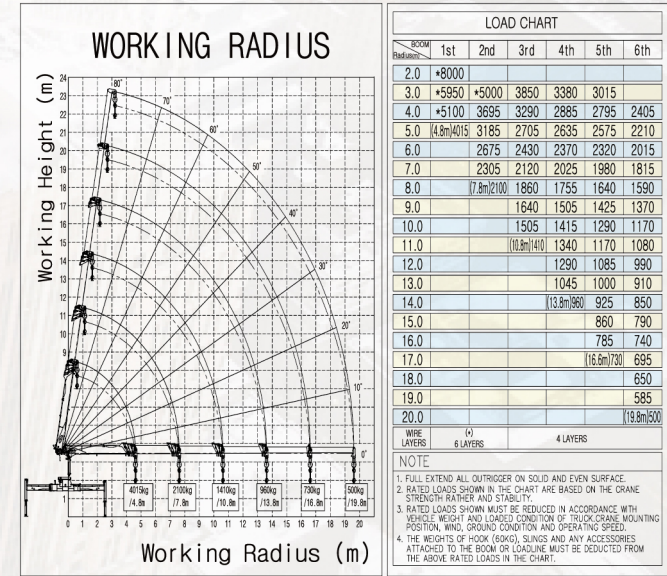
Lifting capacity/Working height (kgf/m)



Layout



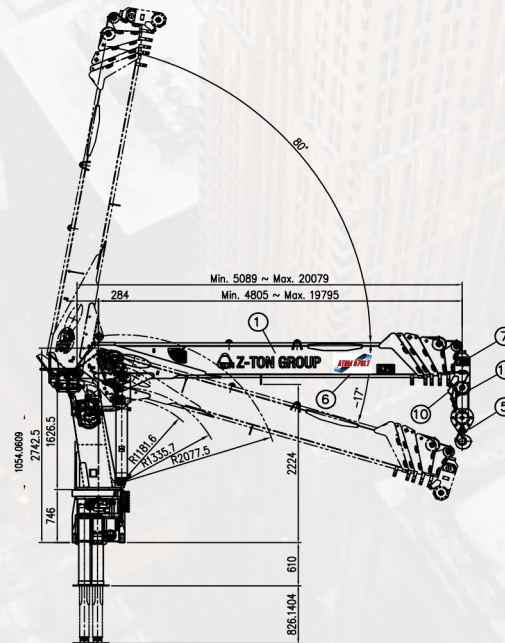
WORKING RADIUS



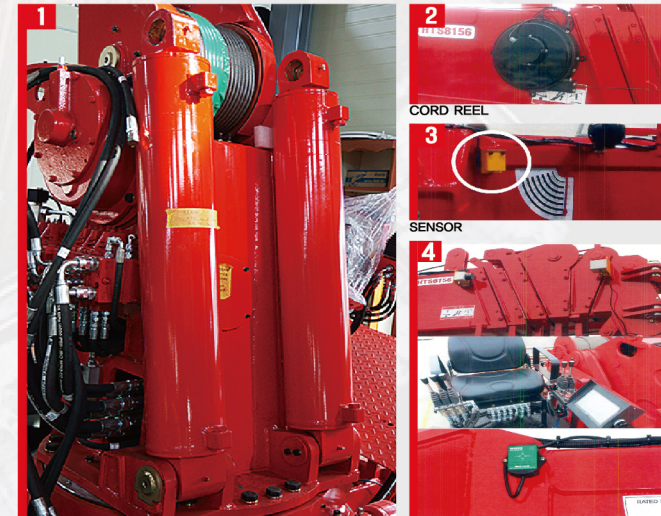
Specification

DESCRIPTION		UNITS	ZTON876LT / 876M
Lifting Capacity		ton-meter	18.0
Lifting Capacity / Outreach			8,000 / 2.0
			4,015 / 4.8
			2,100 / 7.8
			1,410 / 10.8
			960 / 13.8
			730 / 16.8
Working Radius		m	500 / 19.8
Max. Working Height		m	22.5
Rated Oil Flow(1000rpm)		cc/rev	61
Working Pressure		kg/cm ²	200
Shape Of Boom			Hexagonal box construction, 6section boom with 3extension cylinder
Boom Extending Speed		m/sec	14.99 / 33
Boom Raising Speed		°/sec	0~80 / 13
Slewing Angle		°	360° continuous
Slewing Speed		r.p.m	2.0
Wire Rope		Ø x m	Hercules 19x7 Ø10 x 120m
Hook Speed		m/min	17 (4th layer / 4 fall lines)
Winch Type			Hyd. motor driven, spur gear speed reduction with mechanical brake
Slewing Gear Type			Hyd. motor driven, worm gear speed reduction with hydraulic brake
Outtrigger system	Front	Type	Single stage horizontally & Vertically Hydraulic operated
		Span	m Max.5.61
	Rear	Type	Single stage horizontally & Vertically Hydraulic operated
		Span	m Max. 4.56
Truck chassis, recommended (pay load)		ton	5.0 ~ 8.0
Standard Safety Devices			1. Pressure relief valve for hydraulic circuit 2. Counter balance valves for raise and telescope cylinder 3. Pilot check valves for vertical outrigger cylinder 4. Hydraulic brake for slewing reduction gear 5. Mechanical brake for winch reduction gear 6. Pressure gauge / Boom angle indicator 7. Hook safety latch / Alarm buzzer 8. Over-winding alarm device
Option			1. Over-winding prevention system 2. Overload prevention system 3. Oil Cooler

* Minus angle operation



Details



*Above specification may be changed without notice due to improvement.