



(주)지톤그룹
Z-TON GROUP CORP.



Korea's leading equipment manufacturer

Z-TON GROUP CORPORATION

Website : www.atomsv.com | www.ztongroup.com

HEAD OFFICE

[12113] No.801, Ire Tower BLDG, 24, Byeollaejungang-ro,
Namyangju-si, Gyeonggi-do, Korea
Tel: +82 31 574 2081 | Fax: +82 31 573 2086 | E-mail : trade@ztongroup.com

KOREA FACTORY / R&D CENTER

[28105] 274, Hugi-gil, Cheongwon-gun, Chungcheongbuk-do, Korea

VIETNAM HAIPHONG BRANCH

VIETNAM HANOI BRANCH





Z-TON GROUP CORP.

Through endless research and development and constant quality assurance, Z-TON GROUP wishes to become your success partner with our world class products.

Established in 2003, Z-TON GROUP specializes in production of truck-mounted aerial work platforms, cargo cranes and other truck mounted special equipment. The head-office located in Seoul where the capital of the Republic Of Korea. And the factory located in Cheongju city, Chungcheongbuk-do, South Korea.

Based on long-term accumulated experience and efforts, Z-TON equipments has been recognized by different customers from various countries for its quality and performance. In particular, the unique design, excellent stability and safety, and the inherent characteristics of the large load capacity have formed a group of fixed enthusiasts of Z-TON equipment in various countries.

At present, Z-TON's aerial work platforms have achieved the number one sales record in the field of working height of 30m, and are also exported to Russia, China, Israel, Turkey, Vietnam, Malaysia, Indonesia, Dominican Republic, Sri Lanka and many other countries. Z-TON's aerial work platforms achieved a record of no accidents since its establishment.

We will continually strive to improve our equipment and performance to ensure that we develop and produce cutting-edge equipment.

Your satisfaction is our top priority and we are willing to make worldwide long-term partnerships.



Head Office

Factory

TRUCK MOUNTED AERIAL WORK PLATFORMS

Working height : 10m, 12m, 14m, 16m, 18m, 20m, 24m, 30m, 32m, 46m



ZTON125



ZTON140



ZTON160



ZTON180



ZTON200



ZTON240



ZTON300



ZTON320



ZTON460

TRUCK MOUNTED CRANES

Lifting capacity : 3ton, 5ton, 8ton, 12ton, 15ton



LADDER TRUCK

Working height : 28m, 32m, 38m, 45m



GARBAGE COMPACTOR TRUCK

Body Volume : 6m³, 8m³, 10m³, 12m³, 15m³, 17m³, 23m³



TRUCK MOUNTED AERIAL WORK PLATFORM



Options



AML Safety Device



Load Capacity Display



Wireless Remote Control



Front Jack



Emergency DC Pump



Inverter & External switch box

ZTON 105/125

ZTON 105



ZTON 125

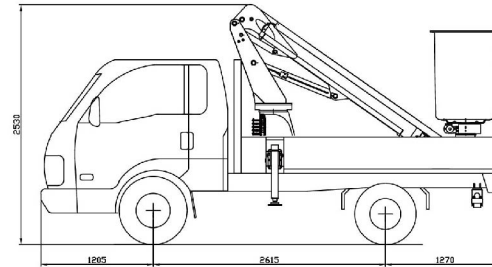


Details

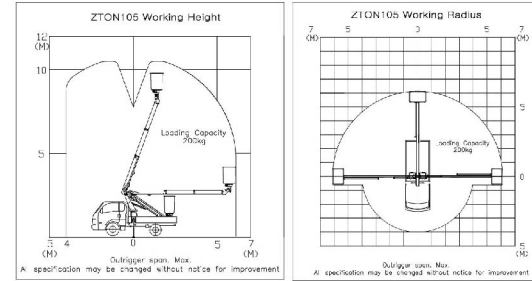


| DESCRIPTION | UNIT | ZTON105 | ZTON125 |
|---|--------------------|--|--|
| Equipment Size (L X W X H) | mm | 3055 X 1800 X 2280 | 3660 X 1800 X 2390 |
| Equipment Weight | kg | 1100 | 1300 |
| Max. Working Height | m | 10,5 | 12,5 |
| Max. Working Radius | m | 6,1 | 7,6 |
| Boom Type / Section | | Pentagon box / 3 section | Pentagon box / 3 section |
| Boom Raising Angle | deg | -35 ~ 70 | -35 ~ 70 |
| Boom Length | m | 2,95~6,15 | 3,52~8,02 |
| Bucket Size (L X W X H) | mm | 1200 X 800 X 1000 (Outer size) | 1200 X 800 X 1000 (Outer size) |
| Bucket Materials | | F,R,P | F,R,P |
| Bucket Rotation Angle | deg | 360 | 360 |
| Max. Bucket Capacity | Kg | 200 | 200 |
| Outrigger Type (Front / Rear) | | H type Fully hydraulic / A type Fully Hydraulic | H type Fully Hydraulic / Horizontal Manual, Vertical Hydraulic |
| Outrigger Max. Expanded span (Front / Rear) | m | 3,60 / 1,38 | 3,60 / 2,45 |
| Turntable Type | | Hydraulic Motor Driven Worm & Spur Gear | Hydraulic Motor Driven Worm & Spur Gear |
| Turntable Slowing | deg | 330 | 330 |
| Hydraulics Working Pressure | Kg/cm ² | 200 | 200 |
| Pump Operation Type | | P.I.O. | P.I.O. |
| Application Chassis (Pay Load) | ton | 1,0 ton and above | 1,2 ton and above |
| Safety Devices | | Pressure relief valve for hydraulic circuit, Boom raising and boom telescoping, Buzzer, Emergency light, leveling overcenter valve, Double Pilot check valves for vertical outrigger, Auto leveling system, Bucket tilting system, Emergency DC pump | |

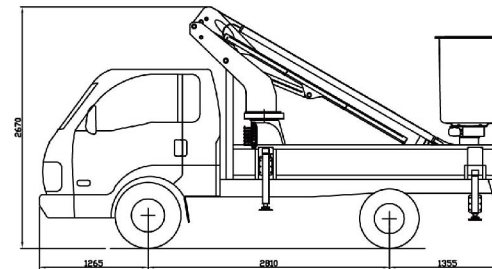
ZTON 105 Layout (example chassis with kia bongo)



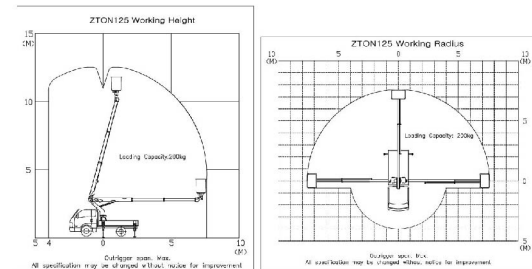
ZTON 105 Working Radius



ZTON 125 Layout (example chassis with kia bongo)



ZTON 125 Working Radius



ZTON 140/160

ZTON 140



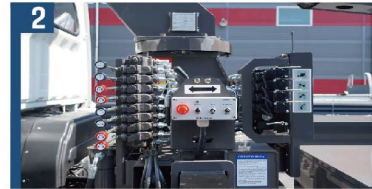
ZTON 160



Details



Wireless remote control



Control system

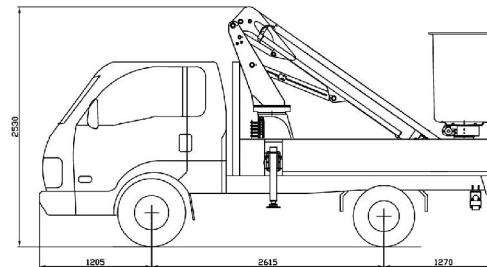


360 angle continuous rotation FRP bucket

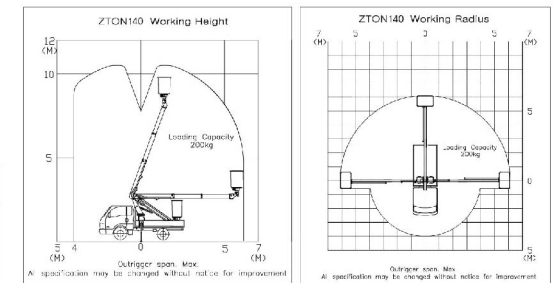


| DESCRIPTION | UNIT | ZTON 140 | ZTON 160 |
|------------------------------|--|--|--|
| Overall Length | mm | 4403 | 4656 |
| Overall Width | mm | 1875 | 1875 |
| Overall Height | mm | 2487 | 2345 |
| Weight of equipment | kg | 1505 (include deck) | 2000 (include deck) |
| Max. Working Height | m | 14.1 | 17.4 |
| Max. Working Radius | m | 9 [100kg] | 13 [100kg] |
| Telescopic | section | Pentagon box / 3 boom | Pentagon box / 4 boom |
| Raising Angle | deg | -28~77 | -23~75 |
| Length | m | 4.16~9.36 | 4.36~13.2 |
| Dimensions (L*W*H) | mm | 800*1200*1000 (outer size) | 800*1200*1000 (outer size) |
| Materials | | F.R.P | F.R.P |
| Expanding (L*W*H) | mm | - | - |
| Rotator | deg | 360 | 360 |
| Max. Platform Capacity | kg | 300 | 300 |
| Outrigger Type | Front | H type Fully hydraulic | H type Fully hydraulic |
| | Rear | H type Fully hydraulic | H type Fully hydraulic |
| Max. Expanded span (F) | m | 4.03 | 4.03 |
| Max. Expanded span (R) | m | 2.96 | 3.83 |
| Type | | Hydraulic Motor Driven Worm & Spur Gear | Hydraulic Motor Driven Worm & Spur Gear |
| Turntable Slewing | deg | 180 | 180 |
| Working Pressure | kg/cm ² | 210 | 210 |
| Pump Operation type | | P.T.O from the vehicle | P.T.O from the vehicle |
| Application Chassis(payload) | ton | HD65 | HD72 |
| Safety Devices | Pressure relief valve for hydraulic circuit, Boom raising and boom telescoping, Buzzer, Emergency light, leveling overcenter valve, Double Pilot check valves for vertical outrigger, Auto leveling system, Bucket tilting system, Emergency DC pump | | |

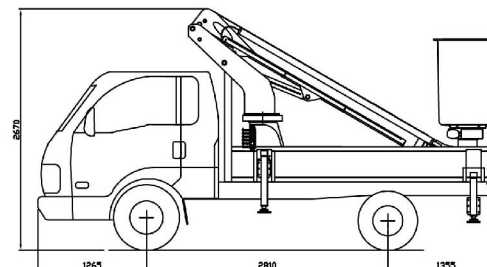
ZTON 140 Layout (example chassis with kia bongo)



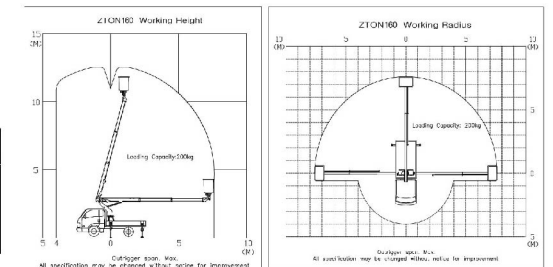
ZTON 140 Working Radius



ZTON 160 Layout (example chassis with kia bongo)



ZTON 160 Working Radius



ZTON 180/200

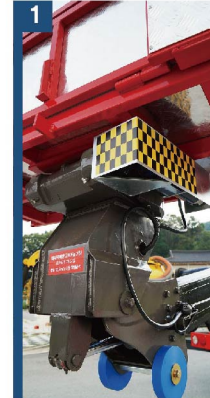
ZTON 180



ZTON 200



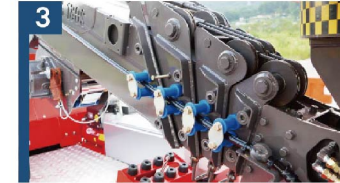
Details



Wider stabilizer device



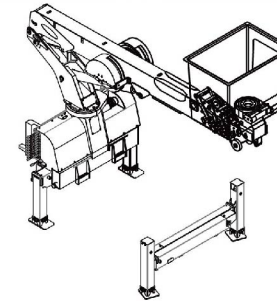
Professional main valve



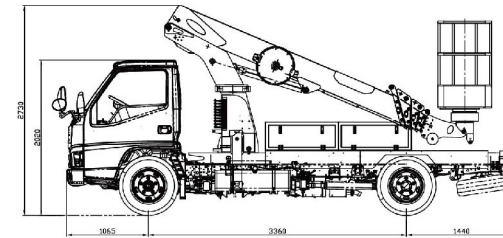
Adjustment pad applied



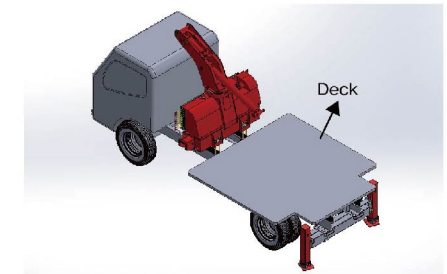
ZTON 180 (Without deck supply)



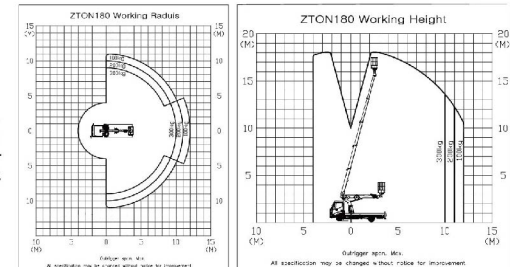
ZTON 180 Layout



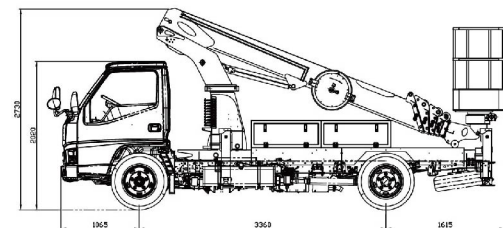
Deck type



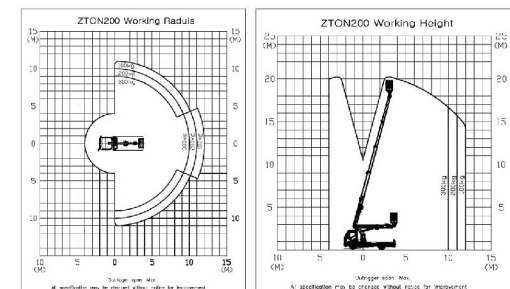
ZTON 180 Working Radius



ZTON 200 Layout



ZTON 200 Working Radius



| DESCRIPTION | UNIT | ZTON 180 | ZTON200 |
|---|--------------------|--|---|
| Equipment Size (L X W X H) | mm | 4260 X 1875 X 2405 | 4700 X 1875 X 2405 |
| Equipment Weight | kg | 2000 | 2000 |
| Max. Working Height | m | 18 | 20,2 |
| Max. Working Radius | m | 12 | 12 |
| Boom Type / Section | | Pentagon box / 5 section | Pentagon box / 5 section |
| Boom Raising Angle | deg | -23 ~ 75 | -23 ~ 75 |
| Boom Length | m | 4,07~13,87 | 4,53~16,25 |
| Bucket Size (L X W X H) | mm | 1200 X 700 X 1130 (Outer size) | 1201 X 700 X 1130 (Outer size) |
| Bucket Materials | | Aluminium | Aluminium |
| Bucket Rotation Angle | deg | 360 | 360 |
| Max. Bucket Capacity | Kg | 300 | 300 |
| Outrigger Type (Front / Rear) | | H type Fully hydraulic / H type Fully Hydraulic | H type Fully hydraulic / H type Fully Hydraulic |
| Outrigger Max. Expanded span (Front / Rear) | m | 4,07 / 3,83 | 4,07 / 3,83 |
| Turntable Type | | Hydraulic Motor Driven Worm & Spur Gear | Hydraulic Motor Driven Worm & Spur Gear |
| Turntable Slewing | deg | 330 | 330 |
| Hydraulics Working Pressure | Kg/cm ² | 210 | 210 |
| Pump Operation Type | | P.T.O. | P.T.O. |
| Application Chassis (Pay Load) | ton | 1,0 ton and above | 1,2 ton and above |
| Safety Devices | | Pressure relief valve for hydraulic circuit, Room raising and boom telescoping, Buzzer, Emergency light, leveling overcenter valve, Double Pilot check valves for vertical outrigger, Auto leveling system, Bucket tilting system, Emergency DC pump | |

ZTON 240/300



ZTON 240



ZTON 300

AML Safety device



AML Controller



AML Length sensor



AML Turning sensor



AML Load Cell

Details



Full chain



X type Outrigger



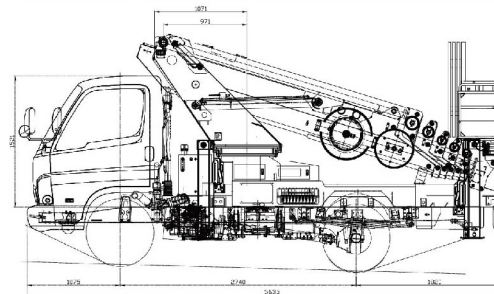
Adjustable type bucket rotary reducer



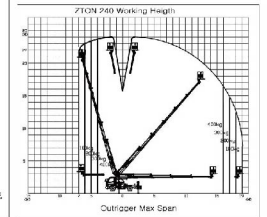
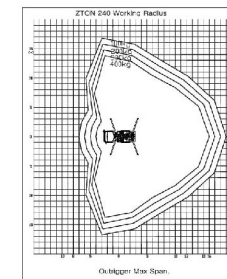
Top seal



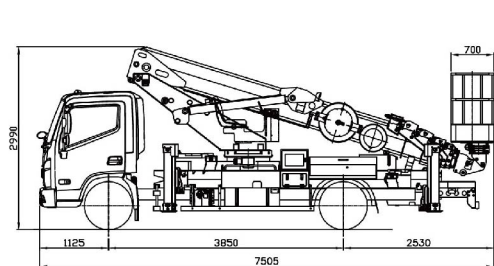
ZTON 240 Layout



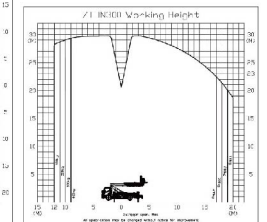
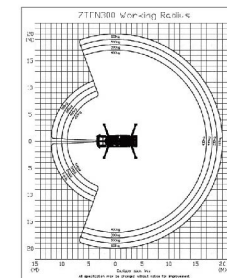
ZTON 240 Working Radius



ZTON 300 Layout



ZTON 300 Working Radius



| DESCRIPTION | UNIT | ZTON240 | ZTON300 |
|---|--------------------|--|---|
| Equipment Size (L X W X H) | mm | 4360 X 1925 X 2380 | 6010 X 2080 X 2700 |
| Equipment Weight | kg | 4405 | 5140 |
| Max. Working Height | m | 24 | 29,7 |
| Max. Working Radius | m | 20 (100kg) | 20 (100kg) |
| Boom Type / Section | | Hexagonal box / 7 boom | Octagonal box / 6 section |
| Boom Raising Angle | deg | -17 ~ 79 | -20 ~ 79 |
| Boom Length | m | 4,9 ~ 20,3 | 5,81 ~ 21,20 |
| Bucket Size (L X W X H) | mm | 1160 X 2759 X 1040 (Outer size) | 1200 X 700 X 1130 (Outer size) |
| Bucket Materials | | Aluminium | Aluminium |
| Bucket Rotation Angle | deg | 360 | 360 |
| Max. Bucket Capacity | Kg | 400 | 400 |
| Outrigger Type (Front / Rear) | | X type Fully hydraulic / X type Fully Hydraulic | X type Fully hydraulic / X type Fully Hydraulic |
| Outrigger Max. Expanded span (Front / Rear) | m | 5,60 / 5,60 | 6,43 / 6,43 |
| Turntable type | | Hydraulic Motor Driven Worm & Spur Gear | Hydraulic Motor Driven Worm & Spur Gear |
| Turntable Slowing | deg | 360 | 355 |
| Hydraulics Working Pressure | Kg/cm ² | 210 | 210 |
| Pump Operation Type | | P.T.O. | P.T.O. |
| Application Chassis (Pay Load) | ton | 2,5 ton and above | 3,5 ton and above |
| Safety Devices | | Pressure relief valve for hydraulic circuit, Boom raising and boom telescoping, Buzzer, Emergency light, leveling overcenter valve, Double Pilot check valves for vertical outrigger, Auto leveling system, Bucket tilting system, Emergency DC pump | |

ZTON 320/460

ZTON 320



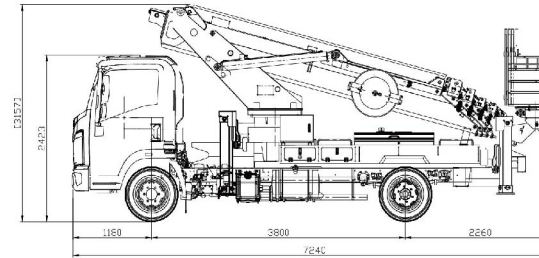
ZTON320



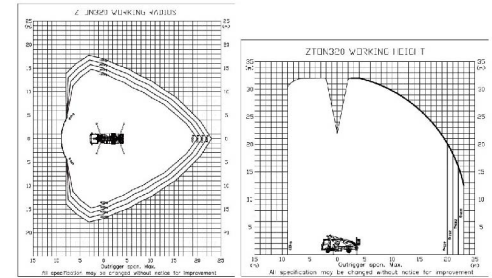
ZTON 460



ZTON 320 Layout



ZTON 320 Working Radius

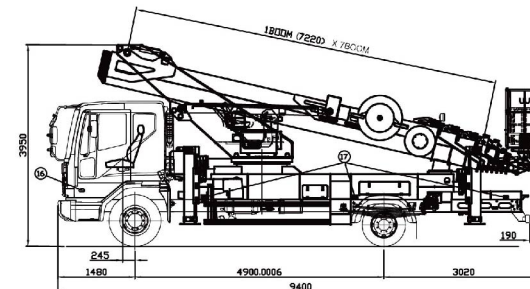


ZTON460

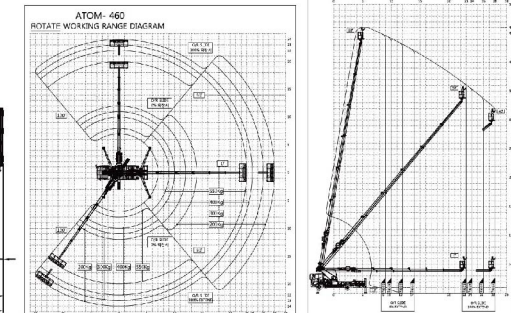


| DESCRIPTION | UNIT | ZTON320 | ZTON460 |
|---|--------------------|--|---|
| Equipment Size (L X W X H) | mm | 6110 X 2300 X 2800 | 8760 X 2495 X 3528 |
| Equipment Weight | kg | 5140 | 11100 |
| Max. Working Height | m | — | 46 |
| Max. Working Radius | m | 23 (100Kg) | 28 (100Kg) |
| Boom Type / Section | | Hexagon box / 7 boom | Octagonal box / 7 section |
| Boom Raising Angle | deg | -16 ~ 80 | -13 ~ 80 |
| Boom Length | m | 5,58 ~ 27,48 | 7,20 ~ 38,1 |
| Bucket Size (L X W X H) | mm | 1950 X 770 X 1175 (Outer size) | 1800 X 650 X 1100 (Outer size) |
| Bucket Materials | | Aluminium | Aluminium |
| Bucket Rotation Angle | deg | 360 | 360 |
| Max. Bucket Capacity | Kg | 400 | 550 |
| Outrigger Type (Front / Rear) | | X type Fully hydraulic / X type Fully Hydraulic | X type Fully hydraulic / X type Fully Hydraulic |
| Outrigger Max. Expanded span (Front / Rear) | m | 6,57 / 6,57 | 9,20 / 9,20 |
| Turntable Type | | Hydraulic Motor Driven Worm & Spur Gear | Hydraulic Motor Driven Worm & Spur Gear |
| Turntable Slewing | deg | 380 | 355 |
| Hydraulics Working Pressure | Kg/cm ² | 210 | 210 |
| Pump Operation Type | | P.T.O. | P.T.O. |
| Application Chassis (Pay Load) | ton | 3.5 ton and above | 5,0 ton and above |
| Option | | Wireless remote controller, AML system | — |
| Safety Devices | | Pressure relief valve for hydraulic circuit, Boom raising and boom telescoping, Buzzer, Emergency light, leveling overcenter valve, Double Pilot check valves for vertical outrigger, Auto leveling system, Bucket tilting system, Emergency DC pump | |

ZTON 460 Layout



ZTON 460 Working Radius



TRUCK MOUNTED CRANE



Options



Overloading Prevention System



Overwinding Prevention System



Overwinding Alarm



Oil Cooler

ZTON 334/514/515



ZTON 334

3,500/2.5 2,150/3.34 1,180/5.54 810/7.74 600/10.0

Lifting capacity/Working height (kg/m)

ZTON 514

5,500/2.5 2,460/3.4 1,360/5.6 940/7.8 700/10.0

Lifting capacity/Working height (kg/m)

ZTON 515

5,000/2.5 2,240/3.4 1,190/5.6 800/7.8 590/10.0 450/12.2

Lifting capacity/Working height (kg/m)

| DESCRIPTION | UNIT | ZTON334 | ZTON514 | ZTON515 |
|-----------------------------|---|------------------------------------|--|------------------------------------|
| Lifting Capacity | ton-meter | 9.0 | 11.0 | 11.0 |
| Lifting Capacity / Outreach | Kgt/m | 3,500 / 2.5 | 5,000 / 2.5 | 5,000 / 2.5 |
| | | 2,150 / 3.34 | 2,460 / 3.4 | 2,240 / 3.4 |
| | | 1,180 / 5.54 | 1,360 / 5.6 | 1,190 / 5.6 |
| | | 810 / 7.74 | 940 / 7.8 | 800 / 7.8 |
| | | 600 / 10.0 | 700 / 10.0 | 590 / 10.0 |
| Working Radius | m | 10.0 | 10.0 | 12.2 |
| Max. Working height | m | 13.0 | 13.0 | 15.0 |
| Rated Oil Flow (1000rpm) | cc/rev | 40 | 40 | 40 |
| Working Pressure | Kg/cm ² | 190 | 190 | 190 |
| Shape Of Boom | | Hexagonal / 4 section / 2 cylinder | Hexagonal / 4 section / 3 cylinder | Hexagonal / 5 section / 2 cylinder |
| Boom Length | m | Min. 3.54 ~ Max. 10.065 | Min. 3.54 ~ Max. 10.14 | Min 3.065 ~ Max. 12.405 |
| Slewing Angle | ° | 360° continuous | 360° continuous | 360° continuous |
| Wire Rope | Ø X m | Ø8 X 75m (Hercules 19 X 7) | Ø8 X 75m (Hercules 19 X 7) | Ø8 X 75m (Hercules 19 X 7) |
| Hook Speed | m/min | 15 (4th layer / 4 fall lines) | 15 (4th layer / 4 fall lines) | 15 (4th layer / 4 fall lines) |
| Truck chassis, recommended | ton | 3.5 ton above | 3.5 ~ 5.0 ton above | 3.5 ~ 5.0 ton above |
| Standard Safety Devices | 1, Pressure relief valve for hydraulic circuit | | 2, Counter balance valves for raise and telescope cylinder | |
| | 3, Pilot check valves for vertical outrigger cylinder | | 4, Mechanical brake for winch reduction gear | |
| | 5, Pressure gauge / Boom angle indicator | | 6, Hook safety latch / Alarm buzzer | |
| | 7, Over-winding alarm device | | | |
| Optional | 1, Over-winding prevention system | | 2, Overload prevention system | |
| | 3, Oil Cooler | | 4, Rear Outrigger | |

Details

1



Body reinforcement

2



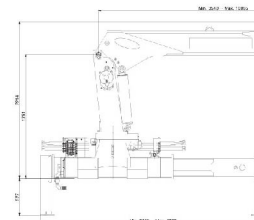
Low noise winch

3

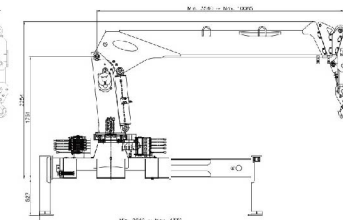


Outrigger double check valve

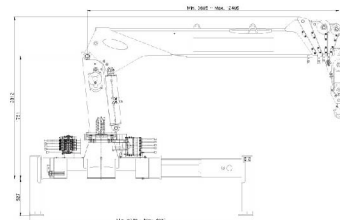
ZTON 334 Layout



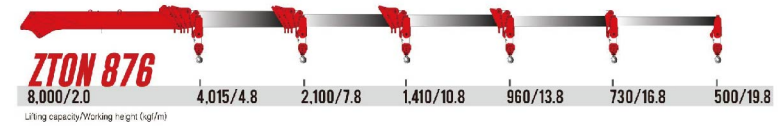
ZTON 514 Layout



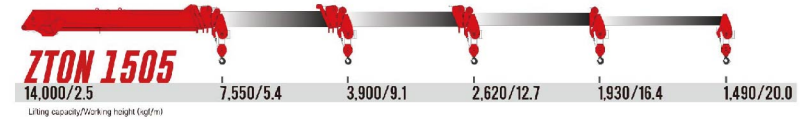
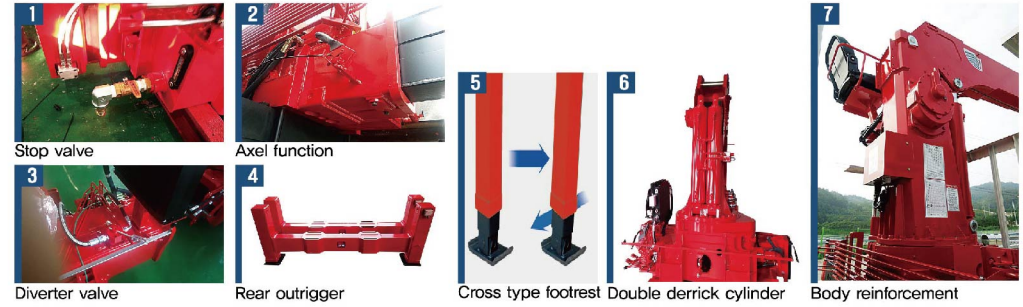
ZTON 515 Layout



ZTON 876/1205/1505

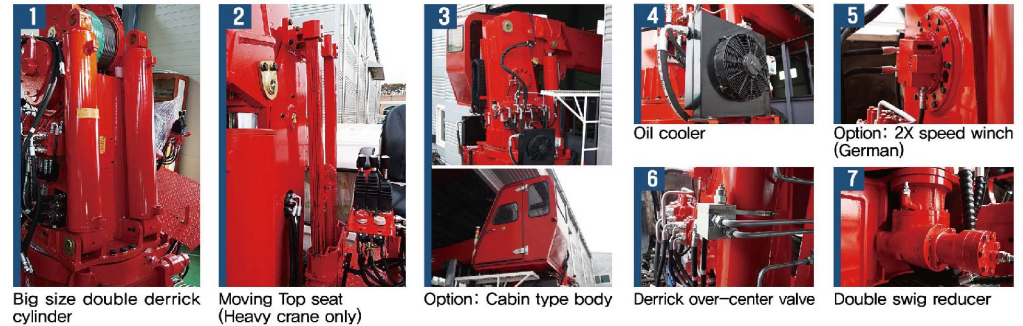


Details

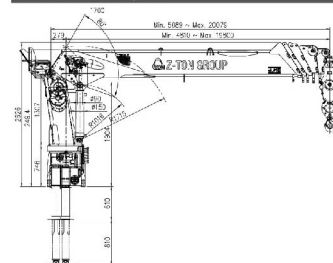


| DESCRIPTION | UNIT | ZTON876 | ZTON1205 | ZTON1505 |
|-----------------------------|--------------------|---|--|------------------------------------|
| Lifting Capacity | ton-meter | 18.0 | 30.0 | 42.0 |
| Lifting Capacity / Outreach | Kgt/m | 8,000 / 2.0 | 12,000 / 2.5 | 14,000 / 2.5 |
| | | 4,015 / 4.8 | 5,600 / 4.9 | 7,550 / 5.4 |
| | | 2,100 / 7.8 | 2,940 / 8.0 | 3,900 / 9.1 |
| | | 1,410 / 10.8 | 1,980 / 11.1 | 2,620 / 12.7 |
| | | 960 / 13.8 | 1,460 / 14.2 | 1,930 / 16.4 |
| | | 730 / 16.8 | 1,120 / 17.3 | 1,490 / 20.0 |
| | | 500 / 19.8 | | |
| Working Radius | m | 19.8 | 17.3 | 20.0 |
| Max. Working height | m | 22.5 | 20.3 | 23.0 |
| Rated Oil Flow (1000rpm) | cc/rev | 61 | 90 X 90 | 90 X 90 |
| Working Pressure | Kg/cm ² | 200 | 210 | 210 |
| Shape Of Boom | | Hexagonal / 6 section / 3 cylinder | Hexagonal / 5 section / 2 cylinder | Hexagonal / 5 section / 2 cylinder |
| Boom Length | m | Min. 5,089 ~ Max. 20,079 | Min. 5,17 ~ Max. 17,57 | Min. 5,72 ~ Max. 20,32 |
| Slewing Angle | ° | | 360° continuous | |
| Wire Rope | Ø X m | Ø10 X 120m (Hercules 19 X 7) | Ø12 X 80m (Hercules 19 X 7) | Ø14 X 100m (Hercules 19 X 7) |
| Hook Speed | m/min | 17 (4th layer / 4 fall lines) | 15 (4th layer / 4 fall lines) | 15 (4th layer / 4 fall lines) |
| Truck chassis, recommended | ton | 5.0 ~ 8.0 | 11.0 above | 15.0 above |
| Standard Safety Devices | | 1. Pressure relief valve for hydraulic circuit | 2. Counter balance valves for raise and telescope cylinder | |
| | | 3. Pilot check valves for vertical outrigger cylinder | 4. Hydraulic brake for slewing reduction gear | |
| | | 5. Mechanical brake for winch reduction gear | 6. Pressure gauge / Boom angle indicator | |
| | | 7. Hook safety latch / Alarm buzzer | 8. Over-winding alarm device | |
| Optional | | 1. Over-winding prevention system | 2. Overload prevention system | 3. Oil Cooler |

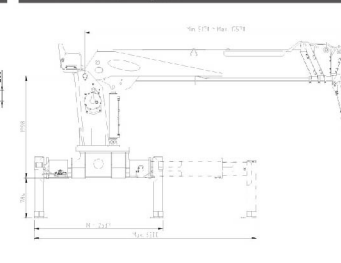
Details



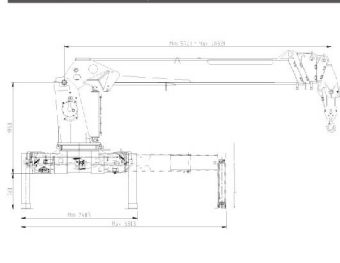
ZTON 876 Layout



ZTON 1205 Layout



ZTON 1505 Layout



LADDER TRUCK

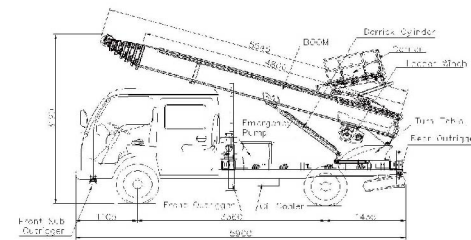


| ITEM | UNIT | ZTON280LT | ZTON320LT | ZTON380LT | ZTON450LT |
|---------------------------|--------------------|-----------------------------|-----------------------------|------------------------------|-----------------------------|
| Dimension (L X W X H) | mm | 5,900 X 1,910 X 3,190 | 6,085 X 1,910 X 3,210 | 6,335 X 2,160 X 3,055 | 7810 X 2,250 X 3,390 |
| Max. Lifting Height | m | 28 | 32 | 38 | 45 |
| Ladder Boom Length | mm | 4,800 | 5,400 | 5,400 | 7,000 |
| Section | | 7 | 7 | 9 | 8 |
| Material | | High tension aluminum alloy | High tension aluminum alloy | High tension aluminum alloy | High tension aluminum alloy |
| Weight / Radius | Kg/m, ° | 300/15, 60° | 300/15, 45° | 300/15, 60° | 300/15, 60° |
| | | 350/20, 65° | 300/20, 55° | 350/20, 65° | 350/20, 65° |
| | | 350/25, 70° | 350/25, 65° | 350/25, 65° | 350/25, 70° |
| | | 400/30, 80° | 400/30, 75° | 400/30, 80° | 400/30, 80° |
| | | 400/35, 85° | 400/35, 85° | 400/35, 85° | 400/35, 85° |
| Carrier Lifting Capacity | Kg | 400 | 400 | 400 | 400 |
| Carrier Size (L X W X H) | mm | 2,260 X 1,450 X 500 | 2,260 X 1,450 X 500 | 2,410 X 1,740 X 520 | 2,410 X 1,740 X 520 |
| Carrier Elevating Speed | m/min | 60 | 60 | 60 | 60 |
| Rotation angle | ° | 270 | 270 | 270 | 270 |
| Hydraulic Pressure | Kg/cm ² | 180 | 180 | 180 | 180 |
| Hydraulic Capacity | cc/rev | 20 | 20 | 51 | 51 |
| Out-rigger Type | | H-Type (Manual/Automatic) | H-Type (Manual/Automatic) | H-Type (Manual/Automatic) | H-Type (Manual/Automatic) |
| Out-rigger Extension Span | mm | 3820 | 3820 | Front : 4,340 / Rear : 6,115 | 6215 |

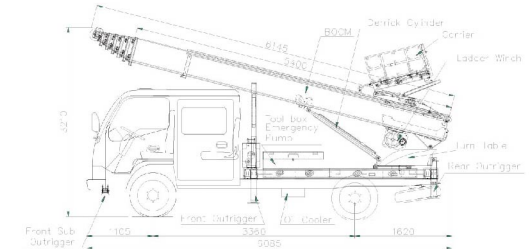
Details



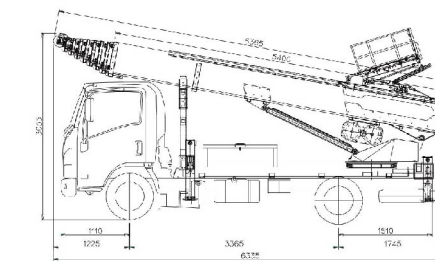
ZTON 280LT Layout



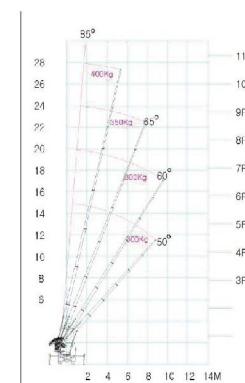
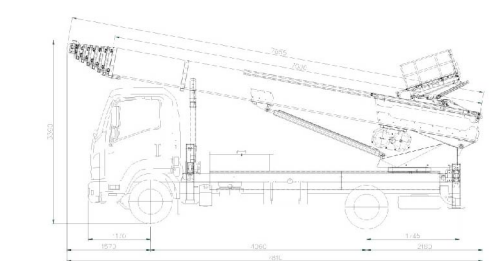
ZTON 320LT Layout



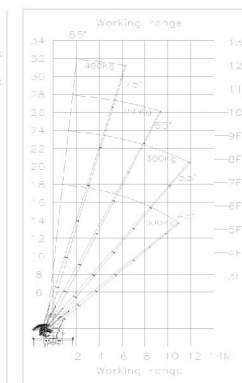
ZTON 380LT Layout



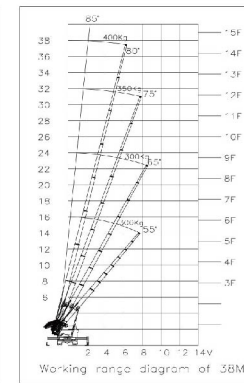
ZTON 450LT Layout



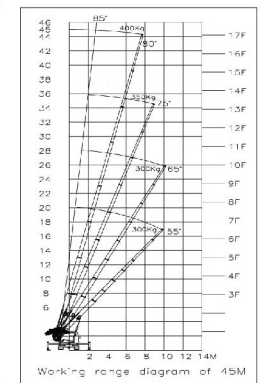
ZTON 280LT



ZTON 320LT



ZTON 380LT



ZTON 450LT

TRUCK MOUNTED GARBAGE COMPACTOR



Z-TON GROUP SPECIAL VEHICLES

Ladder Truck



25M



32M



38M



45M

CRANE



Cargo Crane



Auger Crane



Mobile Repair Truck



Fixed Crane

ROUND SUPPORT EQUIPMENT



Aircraft Refueler Truck



Aircraft oil Transport Truck



Refueler Tank



ENVIRONMENT VEHICLES



Armroll Truck



Garbage Compactor



Street Flusher



Vacuum Lorry

FIRE FIGHTING VEHICLES



Fire Fighting Ladder Truck



Fire Fighting Truck



Blot Control Truck (Water Cannon Truck)

SELF-LOADER



Self Loader



Crane Self Loader



Foldable Self Loader



Safety Loader

OTHERS



Ground Power Supply Equipment Truck



Drinking Water Supporting Truck



Refueler Tank



Wing Body Truck